

# CCD Target Precision Punch

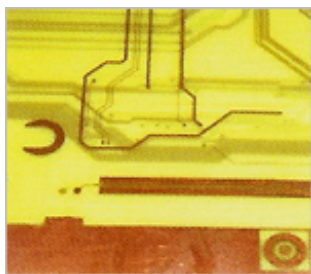
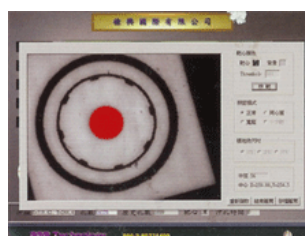
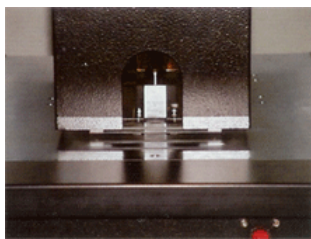
High Precision (+/- 0.020mm); High Speed (0.55 ~ 0.65 sec. per hole) Punch

## PR-2003 Features:

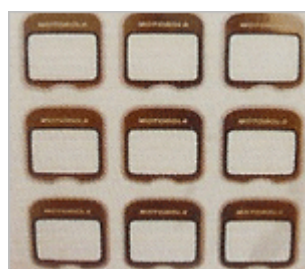
1. High precision automatic target search with material quick locking system
2. High Precision Servo Motor Control System (Punch Accuracy : +/- 0.020 mm)
3. Extremely fast punching action (0.55 ~ 0.65 sec./hole)
4. Transparent holding plate for easy material positioning
5. Chrome plated tabletop, very strong and very good scratch resistance
6. Top/Bottom illumination lamp for easy target recognition
7. Special durable punch head mechanism which allows quick changing (within 1 min.) and adjustment free
8. User-friendly control interface with Color TFT LCD monitor
9. German pneumatic system for maximum reliability and minimum maintenance

## PR-2003 Specifications :

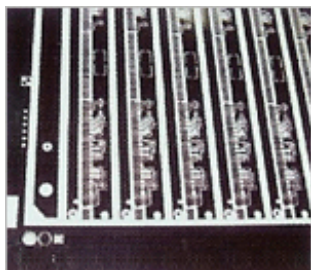
Material Thickness	0.08~1.0mm
Punching Speed	0.55 ~ 0.65 sec./hole
Accuracy	+/- 0.02mm
Punch Size	0.8 ~ 5.0mm
Target Size	0.3 ~ 4.0mm
Process Range	200 mm, or 250 mm(Optional)
Operating System	Windows
Monitor	TFT LCD
Illumination	TOP & BOTTOM LED Lamp
Operation	Mouse and Keyboard
Air	6 kg/cm <sup>2</sup> dehumidified
Power	AC 220V 1Ø 50/60Hz
Dimensions	870x900x1390mm(W x L x H)
Weight	250KG
Waste Collection	Vacuum Included
Optional	Ø1.0~Ø4.0mm Punch Mold can be ordered



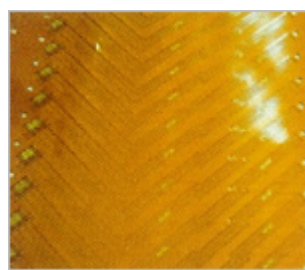
Inner Layer Boards



Membrane Overlays  
(Nameplate)



Black/ Brown Negative Films



Flexible PCB ( FPC)

**trustwell**  
neotechnology

**trustwell neotechnology co., Ltd.**

5<sup>th</sup> FL., NO. 381, SEC. 2, FU HSING S. RD., TAIPEI, TAIWAN(106)

TEL.:+886-(0)2-2733-2297 FAX.:+886-(0)2-2735-4291, +886-(0)2-2733-6201

Website: [www.trustwell.com.tw](http://www.trustwell.com.tw); E-Mail: [trustwell@trustwell.com.tw](mailto:trustwell@trustwell.com.tw);

